

VEHICLE EQUIPMENT

STANDARD VEHICLE BODIES

INDUSTRY SPECIFIC BODIES

SPECIALIST VEHICLE CONVERSIONS





Our mission...

To maximise the potential
of your Vehicle and
Operation

Our vision...

To enhance the
experience of every
Commercial Vehicle User



Welcome...

...To our new 2016 catalogue that will ensure your vehicle becomes more efficient and an environment in which your staff will want to operate.

This comprehensive publication harnesses over 35 years of experience in the LCV sector and we are confident this will become an invaluable resource for our customers.



What we do

The TGS Group offer a comprehensive range of products and services that are all designed to increase the efficiency and potential of your vehicles and staff.

Where applicable products are tested to recognised industry standards and all bear the hallmark of 'TGS' quality whilst being competitively priced.

The TGS Group are ISO9001:2008 accredited and have an environmental policy in line with ISO 14001.

We are also fully committed to Whole Vehicle Type Approval and are actively engaged in product development, systems and processes to meet this exciting challenge.

To discuss your requirements, be free to contact us on:

phone: 0117 965 9965
email: sales@tgs-group.com
website: www.tgs-group.com

now... That's Great Service

The TGS experience - total contract management

The success of TGS can be attributed to hard work, a sound business model and close interaction with our clients.

We fully understand the frustrations that can arise during the vehicle preparation process and the TGS experience can be enjoyed by Fleet Operators, Leasing Companies, Local Authorities, Emergency Services, Housing Maintenance Companies and many more.

The TGS experience encompasses the following:

- No obligation consultancy and advice service including Type Approval
- Complete management of conversions including third party contractors - this means that you will have one point of contact no matter how many sub contractors are involved
- Bespoke spreadsheet/communication system to suit your requirements
- CAD illustrations
- Prototyping
- Destination codes for receiving vehicles from import centre

- Complete vehicle conversions
- Vehicle livery and wrapping
- Driver packs
- PDI
- Vehicle storage
- Valeting
- Onward delivery to destination of choice

By taking full advantage of this market leading service, the TGS experience will:

- Help to control or minimise costs
- Reduce lead times
- Allow customers to track progress easily
- Free valuable time for our customers to spend on core business





Contents

Important industry information

Type Approval	10
Safety	11

Vehicle equipment

Internal lining systems	14-15
Internal racking and storage systems	16-20
Roofrack systems and accessories	21-27
External transportation systems	28-29
Towing equipment	30-32
Beacons and hazard warning systems	33
Internal and external lighting	34
Health and safety products	35
Physical security	36
Seat covers	37
Restraint equipment	38
Reversing aids	39
On-board power	40
Vinyl graphics	41-43
Ramps	44
Tailifts	45

Standard vehicle bodies

Dropside bodies	49
Tipping bodies	50-51
Dry freight bodies	52-55

Industry specific bodies

Landscaping/grounds maintenance	58-61
Arboriculture	62-63
Refuse and cleansing	64-67
Highways/civil engineering	68-69

Specialist vehicle conversions

Animal welfare	73
Pest control	74
Traffic management	75
Emergency services	76-77
Utilities	78
Safety rails and access	79
Accessible	80
Seating	81-82
Welfare conversions	83
Healthcare/medical	84-85
Water systems	86
Terms & conditions	88-89



TGS Type Approval

TGS have one of the most comprehensive portfolios of National Small Series Type Approvals in the UK.

The strategic decision to commit fully to VCA Type Approval has put us firmly at the forefront of the industry.

TGS also have N1 Enhancement Scheme accreditation for Panel Van Conversions.

For help and assistance with this important area feel free to contact our Type Approval Engineer on 0117 9659965.



Safety

Vehicles in which persons, tools, parts and materials are transported or carried are really extensions of the workplace.

Safety should be of paramount importance to all responsible organisations and TGS are committed to providing advice, products and services to support all such organisations.

Where possible our products are:

- Crash tested to ECE R17 (modular racking)
- CE marked
- TUV/GS approved
- 20g city crash tested (roof racks and accessories)
- MI tested (seating and floors)





VEHICLE EQUIPMENT

Internal lining systems	14-15
Internal racking and storage systems	16-20
Roofrack systems and accessories	21-27
External transportation systems	28-29
Towing equipment	30-32
Beacons and hazard warning systems	33
Internal and external lighting	34
Health and safety products	35
Physical security	36
Seat covers	37
Restraint equipment	38
Reversing aids	39
On-board power	40
Vinyl graphics	41-43
Ramps	44
Tailifts	45





TGS offer a full range of plywood lining kits for the majority of Light Commercial Vehicles.

Features:

- CNC machined for consistent quality and fit
- Quality plywood from sustainable sources
- Alloy entry mouldings
- All joints silicone sealed
- Plywood bulkhead options
- Thicker material options
- Phenolic (containerdeck) flooring options



For those that wish to portray a more professional image, the Prokit range of linings from TGS provide an enhanced specification.



Features:

- Polypropylene side panels
- Polypropylene door panels
- Phenolic floor panels
- Phenolic wheelarch boxes
- Alloy entry mouldings
- Sealed joints

TGS offer a comprehensive range of high quality, crash tested modular racking to meet the needs of industry professionals and to maximise the efficiency of their commercial vehicles.

Our modular racking system is designed and built in Europe and is the result of careful, meticulous design work and a thorough awareness of the requirements of those that use commercial vehicles on an everyday basis.

Optimising space

All of our racking solutions are designed to optimise the available space, simplify movement and to ensure that tools, components and materials are within easy reach.

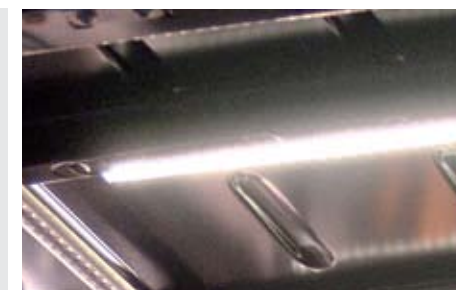
Saving time

A racking solution that allows you to store and retrieve tools, components and materials exactly where you want and need them can only lead to greater efficiency and ultimately will save time and money

Quality and design

Our storage modules are designed with safety, stability, lightness and noise reduction in mind.

Materials include steel, plastic, and aluminium and the structures are tested.



VEHICLE EQUIPMENT • INTERNAL RACKING AND STORAGE SYSTEMS

Safety

Commercial vehicles are largely an extension of our workplaces and should therefore be treated as such. The welfare of our employees should be paramount and our modules are designed taking these factors into account.

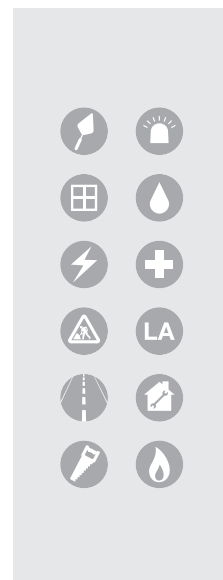
These modules have been crash tested to ECE R17 regulations and are TUV GS approved.

CAD drawings

Our proposals are presented to customers accompanied by high definition and detailed 3D drawings.

In just a very short period of time we can create the inside of a vehicle to suit customer requirements.





The Environment

We have chosen to work with our European manufacturer not only because of the quality of their products, but also because of their fantastic environmental achievements.

The manufacturing facility boasts one of the most advanced and eco-sustainable photovoltaic systems installed to the 45,000m² roof of the production plant.

6140 polycrystalline silicon panels cover an area of 9824m².

This system saves fossil fuels, uses solar energy and reduces wasted electrical power.

The following data highlights the amazing results:

- The theoretical power of the plant is 1412.20 kWp
- Theoretical yearly production is 1,657,800.00 kWh
- Ratio of CO₂ not emitted to the kWh produced = 0.000462 tons of CO₂/kWh.
- Produces 44% of the company's annual demand





The Vantidy range of internal storage modules are designed to meet requirements where budget is the key driver.

These robust modules feature:

- CNC manufacturing
- Durable plywood
- Removable dividers
- Retention lips
- 3 shelves
- Specials made to order

Model	Length (mm)	Depth (mm)	Height (mm)
VT7/300	700	300	1220
VT10/300	1000	300	1220
VT12/300	1200	300	1220
VT19/300	1900	300	1220
VT24/300	2400	300	1220
VT7/400	700	400	1220
VT10/400	1000	400	1220
VT12/400	1200	400	1220
VT19/400	1900	400	1220
VT24/400	2400	400	1220

This market leading roofrack has been designed by professionals for professionals.



These modules feature:

- Fully welded
- Industry leading 2 coat process of electropaint primer and polyester black powder coating
- Quick and easy modular construction
- TUV GS approved
- 20g crash tested
- Full width aerofoil for reduced wind noise and drag
- Full width rear roller for easy loading of ladders and materials
- All racks enable transportation of 8'x4' sheets



Designed to reduce wind noise

To see our
**SPECIALIST
VEHICLE
CONVERSIONS**
See page
74



The Roofbars range offered by TGS is designed to reduce wind noise and drag in comparison to square bar systems.

Features:

- Reduces wind noise by up to 60% and drag by up to 30%
- Manufactured using high tensile steel
- Heavy duty zinc plating
- TUV GS approved
- 20g crash tested



Ladder loading systems - rear offload



The Safestow system is the safe and easy solution for loading and unloading ladders on LCV's.

This product is well proven by many Fleet Users and includes the following features:

- Three versions available to carry single, double and extra wide ladders
- Safe loading and unloading in seconds
- Manufactured from robust alloy and stainless steel components
- Fully adjustable gas setting
- Available in two lengths: 2.2m and 3.1m

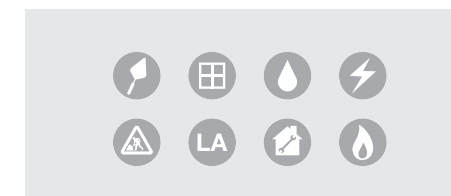
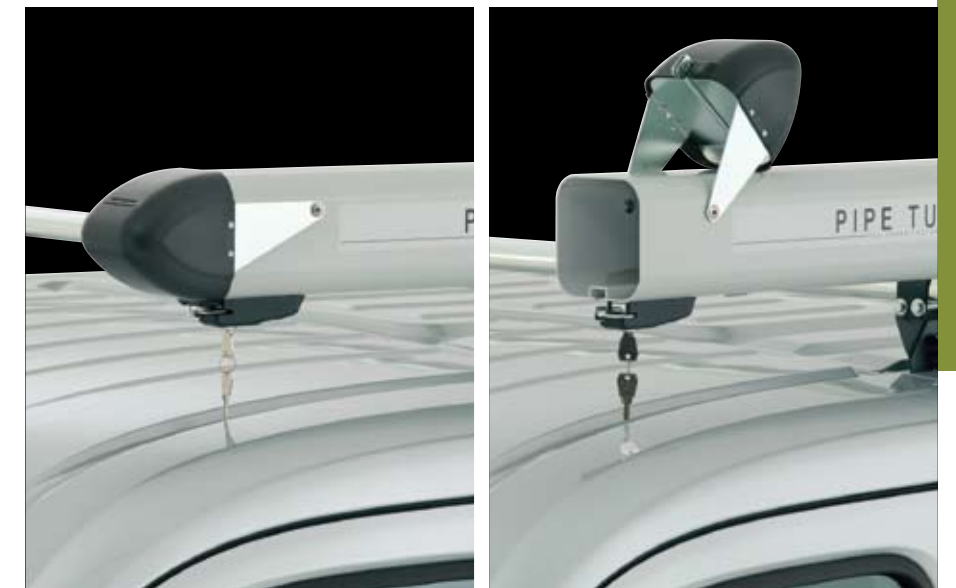


A full range of accessories to compliment your roofrack.



This market leading product includes these unique features:

- Aluminium construction
- Nose cone combines a steel bulkhead for strength
- Aerodynamic nose cones
- 20g crash tested with 50kg load
- Available in 2m and 3m lengths
- Fits over 50 x 15mm copper tubes
- Powder coated to protect materials

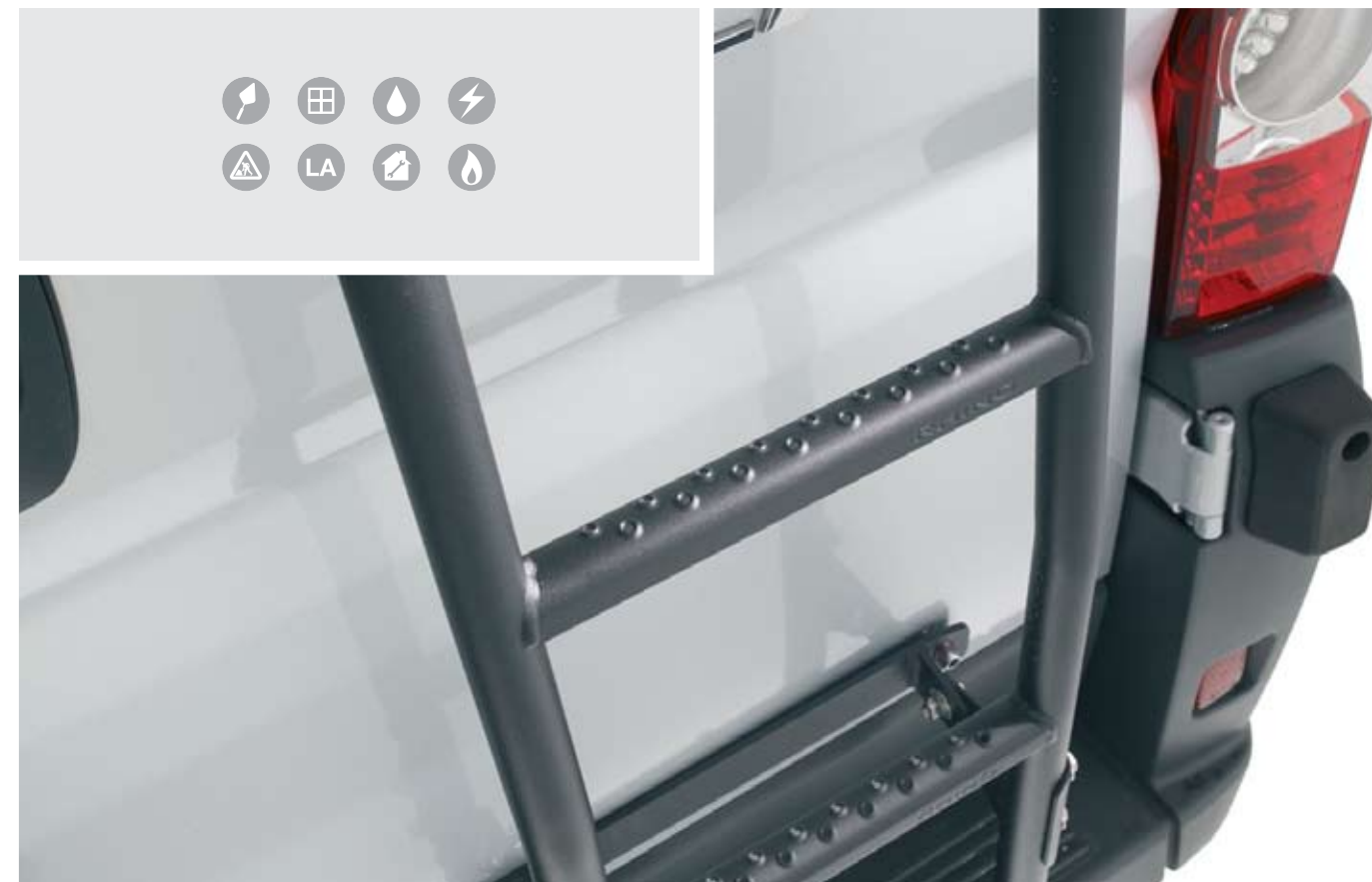




The Safecamp offers strength, speed and style to ladder clamping.

Unique features:

- Manufactured from tough composite materials
- 5 x faster than standard ladder clamps
- 20g crash tested
- Accommodates up to 4 nested ladder sections
- Locks included
- Life cycle tested



For those who are still comfortable with rear door ladders, TGS offer a range of bespoke door ladders to suit most Light Commercial Vehicles.

Features:

- Aesthetically designed
- User friendly hand rails
- Anti slip treads
- Bespoke fitting kits
- Black powder coating finish



Easy transportation of frames and glass



The Framemaster is the first choice for manufacturers, installers and maintainers of double glazed units, conservatories and garage doors.



Features:

- Alloy construction
- Folding base foot – 200mm deep
- Ideally used in conjunction with our Traderack roofrack
- Protection mouldings
- Restraint track

Professional glass transportation



These lightweight and robust frail systems make glass transportation safe and simple. When fitted with our Traderack roofrack system you have the ultimate combination.

Features:

- All alloy construction
- Folding base foot – 200mm deep
- Spring loaded restraint poles with rubber blocks
- Restraint track
- Extruded rubber inserts
- Sign/graphic panels

TGS offer a full range of tested towing equipment for the majority of today's Light Commercial Vehicles.



From standard towbars to full width utility steps TGS offer a solution that will meet the demands of those that need to tow trailers or plant on a regular basis.

TGS only use market leading products and our electricians are trained to deal with the complexities of the modern vehicle.



Standard towbars



Towbar testing

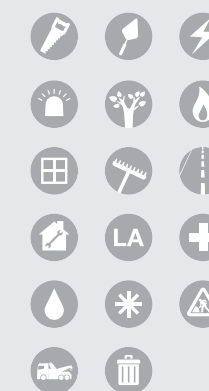


TGS offer a range of towing steps that are ideally suited to Utilities, Service Engineers and other operations where access to the rear of the vehicle is a frequent occurrence.



Features:

- OEM tested and approved
- Fleet health and safety compliance – legal duty of care
- Excellent anti-slip treads
- Optional reverse sensors





Pin/ball combination hitch



Standard 50mm ball

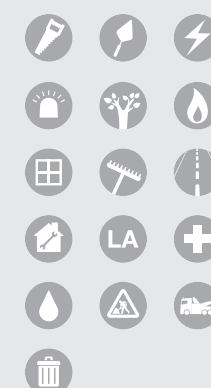


Intelligent 7 pin electrics



Butterfly steps

A comprehensive range of beacons and hazard warning accessories are stocked and installed by our electricians. Whether it be for Utilities, Service Vehicles or Emergency Vehicles TGS offer solutions for all applications.



Beacon bars - rotating



Beacon bars - LED



LED lightheads



Standard beacons



To assist those who use vehicles as mobile workshops, service vehicles, parcel delivery or practically any other trade, additional interior and exterior lighting makes for better working conditions. TGS stock a range of products to suit numerous applications.

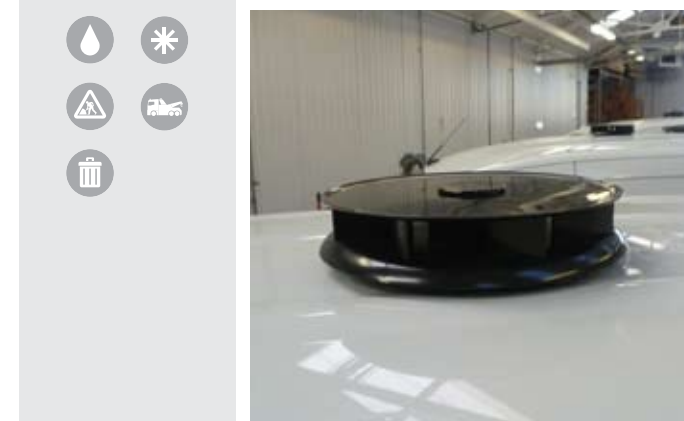
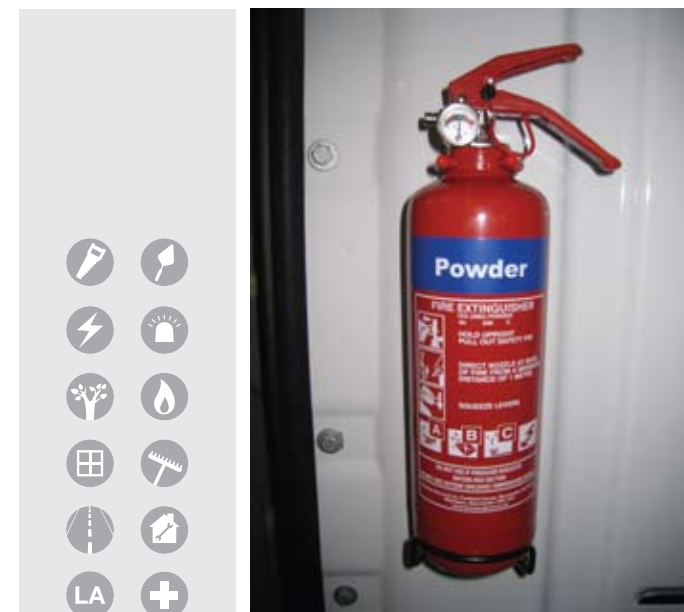
External LED lighting



Internal LED lighting



TGS stock a large range of products that enhance the welfare of all Light Commercial Vehicle users.



The range includes:

- Handwash units
- Hand care stations
- First aid kits
- Fire extinguishers
- Towel dispensers
- Ventilation systems – wind powered and electric units



Seat covers

See
page 85 for
SEATING
for light
commercial
vehicles

VEHICLE EQUIPMENT • SEAT COVERS

It is a sad fact of life that it is necessary to take precautions against the theft of vehicles, tools and equipment.

TGS stock and install quality and proven systems to deter the unwanted attentions of thieves and opportunists.

Our range encompasses:

- Alarm systems
- Deadlocks
- Slamlocks
- Steel bulkheads
- Tool storage
- Windowguards and blanks
- Window tinting
- Laptop safes



Protecting upholstery and other trim from wear and tear can reduce the end of contract costs that are often incurred when vehicles are returned.

Or it may be that you like to look after your vehicles and keep the interior a pleasant place to be.

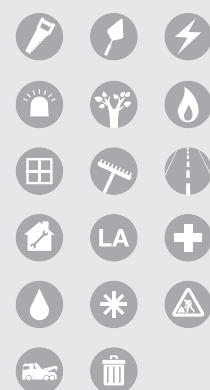
TGS offer a range of seat covers, mats and other items that will help to keep your vehicle in good condition.

A range of non-slip flooring for many applications is available along with soft coverings for professional appearance and sound reduction purposes.



If you cannot see a solution to your problem then contact our helpful team on:

VEHICLE EQUIPMENT • SEAT COVERS



The restraint of loads, parts and equipment that may be carried in vehicles is an essential consideration for all diligent owners and managers of Light Commercial Vehicles.

The very real possibility of legal action arising from persons who have suffered injury or loss as a result of insecure loads is ever increasing.

TGS will work with you to provide a solution that will most suit your requirements.



We stock a range of items that can be installed in vehicles as well as providing bespoke solutions as required:

- Ratchet straps
- Restraint track
- Load restraint poles
- Load rings



TGS offer a wide range of reversing aids to assist the manoeuvring of vehicles with limited visual capabilities.



TGS offer a range of reversing safety systems that will:

- Help to prevent costly accidents
- Reduce workplace injury
- Help to save lives

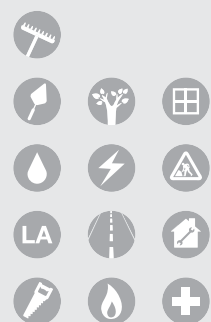
Our range of safety systems cover the following:

- Reversing sensors
- Audible reverse warning alarms
- Rear view camera systems

Whether you require a small inverter to charge cordless tool batteries or a full power system to power air and electric tools, TGS will specify a system that will suit your needs.



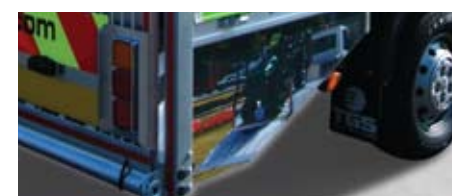
Working with market leading organisations you can rest assured that TGS will only offer quality, proven systems.



To complement the 'one stop' package TGS offer a full vinyl graphic and vehicle wrap service.

Using Industry professionals we can provide the complete package of vehicle branding that is an important part of many organisations marketing and image strategies.

Full client interaction and design is an essential part of the service offered.



To comply with the regulations as set out in the 'Chapter 8' guidelines (see important industry information), TGS offer a full package of high visibility markings to ensure that your vehicles and more importantly your staff are visible and protected whilst working on roads and highways.

TGS are able to advise, design and apply these markings to suit your exact requirements.



What is Chapter 8 and its legal status?

The use of chapter 8 compliant vehicle livery is considered best practice and we recommend that any vehicles stopping on UK roads for works or inspection purposes should be compliant.

It is intended to provide a standard of good practice and is considered as the minimum requirement, which should always be achieved.

Whilst Chapter 8 is not legislation, by not complying with these guidelines you are leaving yourself open to potential legal action should an accident happen involving your fleet.

Officially the Health and Safety at Work, etc. Act 1974 and the Health and Safety at Work (NI) Order 1978 require all clients, employers and employees to establish and maintain safe systems of work.

Chapter 8 may be considered as representing what is reasonably practicable for the enforcement of the Health and Safety at Work etc. Act



1974, the Health and Safety at Work (NI) Order 1978, and associated regulations.

Chapter 8 sets out a code of practice to enable the legal requirements to be met in a wide variety of circumstances. Although it has no statutory force (except in Northern Ireland where an authorised officer for the department may deem it to have such force); it should be noted that many of the basic principles contained in this document are also covered in the Safety at Street Works and Road Works - A Code of Practice, which has legal backing under sections 65 and 124 of the New Roads and Street Works Act 1991 and Article 25 of the Street Works (NI) Order 1995.



To assist with the moving of bulky, heavy or awkward loads, TGS offer a comprehensive range of tailifts for both internal and external applications.



TGS will work with you to ensure that health and safety, duty of care and best practice is observed.



To assist organisations that have to load heavy goods and equipment or need to get mobility equipment into their vehicles, TGS have a comprehensive range of ramps and access products available to meet your requirements.





STANDARD VEHICLE BODIES

Dropside bodies	49
Tipping bodies	50-51
Dry freight bodies	52-55

Standard vehicle bodies



Dropsida bodies

For a full list of
PARTS AND ACCESSORIES
See page 92

As well as offering a comprehensive range of products for panel vans, TGS offer a range of vehicle bodies that have been proven over many years and are designed to reflect the well known TGS quality brand whilst being sensibly priced.



The TGS dropsida body is simple, robust and well proven in many fields of work.

These bodies are constructed from alloy sections and galvanised steel components thus eliminating the need to paint and offering superior corrosion protection.

Key features:

- Galvanised gantry with mesh protection panel
- Alloy dropsides
- Containerdeck flooring
- Thermoplastic mudguards
- Rope hooks in convenient locations
- Easily replaceable components in the event of damage
- Removable, galvanised corner posts

Options to compliment the TGS Dropsida:

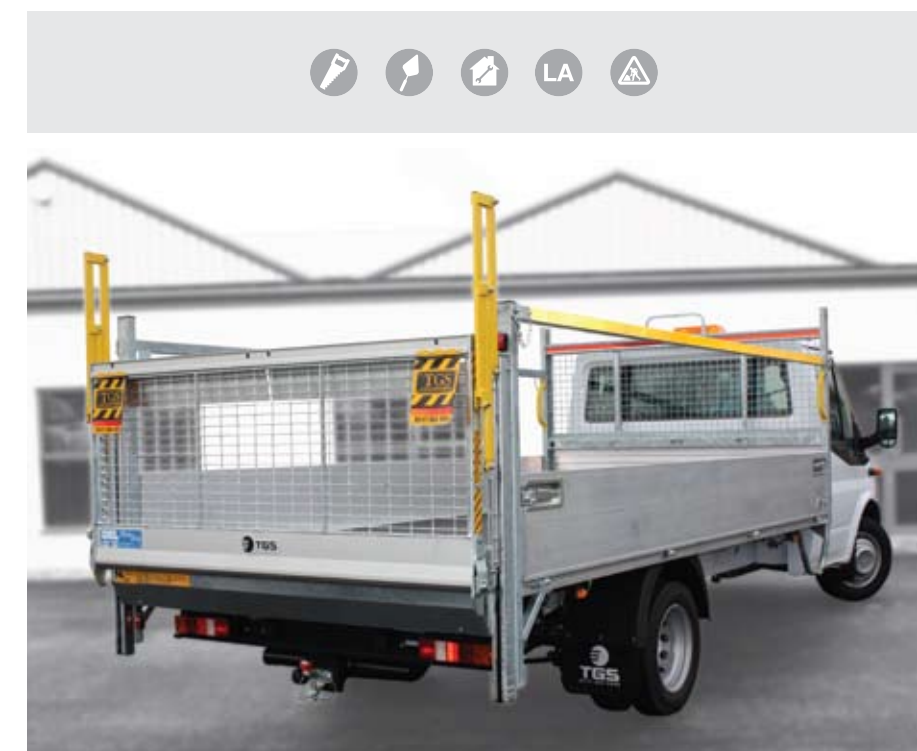
- Meshmaster cage kits
- Towbars
- Beacons
- Toolboxes
- Personnel protection rails

Our standard range of bodies include:

- Dropsida bodies
- Tipping bodies
- Dry freight bodies



We also have a number of industry specific bodies that you will find in the next section.





Alloy tipping bodies

To see
our range of
**VEHICLE
EQUIPMENT**
See page
14



Key features:



Options to compliment the Tippla:

- Meshmaster cage kits
- Toolboxes
- Beacons
- Towbars

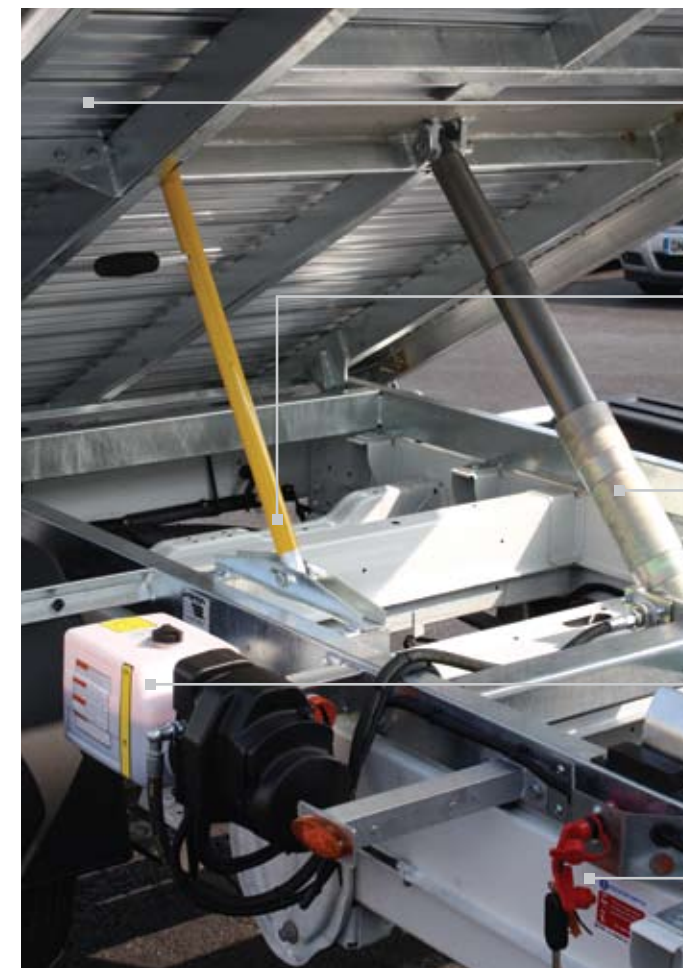


The TGS Tippla is the fruit of many years of development and has proven it's durability many, many times.

It would be fair to say that the TGS Tippla is one of the leading products in the tipping body market and is in service with many different organisations.

The light yet robust and corrosion free construction has been an enduring strength with this product.

In many cases users have changed from steel to aluminium and proved the advantage of increased payloads, durability and removed the need to paint.



Alloy Tippadek floor system



Integral bodyprop



Multistage underfloor ram



Electro hydraulic power pack with hose burst protection



Isolation switch



Galvanised removable corner posts



Two way hinged tailboard



Thermoplastic mudwings

Economic luton bodies with increased payload

TGS offer a range of luton bodies (body extends over cab roof). These bodies are well built whilst keeping cost in mind.



Built to a high standard, these bodies have been utilised by many different organisations.

Bodies can be built using standard GRP panels or we can use market leading lightweight panels where payload is a critical factor.

Key features:

- GRP panels
- Alloy mouldings
- One piece roof
- Interior light
- Restraint track
- Phenolic flooring
- Aerodynamic luton heads

Optional items:

- Lightweight panels
- Alloy underframe
- Wide slat shutters
- Tailifts

Quality curtainside bodies are well proven, functional and well constructed whilst maintaining a competitive edge.

Where operators require increased payload TGS can make use of lightweight materials in the construction process.



Key features:

- Galvanised underframes
- 2 x 2 weave curtains
- One piece roof
- Phenolic flooring
- Quality composite buckles

Optional items:

- Alloy construction
- Barn doors
- Wide slat shutters
- Tailifts
- 3D cab roof wind deflectors



Our range of box bodies bear the hallmark of TGS. Quality whilst maintaining a sensible pricing structure.

Where payload is a critical factor, TGS can construct these bodies from ultra lightweight panels.



Key features:

- GRP panels
- Alloy mouldings
- One piece roof
- Interior light
- Restraint track
- Phenolic flooring
- Aerodynamic luton heads

Optional items:

- Lightweight panels
- Alloy underframe
- Wide slat shutters
- Tailifts





INDUSTRY SPECIFIC BODIES

Landscaping/grounds maintenance	58-61
Arboriculture	62-63
Refuse and cleansing	64-67
Highways/civil engineering	68-69

As a result of our close interaction and history of working with organisations that are involved in Landscaping and Grounds Maintenance, TGS have built up a range of well proven and innovative products that have become essential tools in the efficient operations of Local Authorities and Contractors.

We have listened carefully to our clients, we have looked at issues facing them with payloads and towing laws (in the case of moving machinery around), looked at equipment storage needs, safe load retention and many other areas to ensure that these products are fit for purpose.



The Beavalite body was developed in conjunction with one of the UK's leading Grounds Maintenance Contractors and addressed an immediate need for a lightweight body that could be used instead of trailers.



This body is now in use with the UK's leading organisations and has proved itself time and time again, however, TGS are not complacent and we will always strive to develop and improve our products.

Key features:

- Lightweight construction
- Beavadek floor system
- Alloy sideboards
- Recessed load rings
- Easy access ramp
- LED side and rear lighting

Optional items:

- Full width toolboxes
- Underslung toolboxes
- Beacons
- On-board weighing
- Removable Meshmaster cages



Litter/leaf collection with tool storage



The Utilitruk is a well proven item that is widely used by Local Authority and Grounds Maintenance Contractors that require a tipping body with dedicated tool storage and the ability to collect litter and leafs etc (when used with Meshmaster cage kit).



A secure toolpod with easy access to each side has proved beneficial to our clients and keeps the tipping body free for its intended use.

Key features:

- Alloy tipping body
- Secure toolpod with roller shutter doors to each side
- Galvanised tipping frames
- Multi-stage ram
- Wanderlead controls

Optional items:

- Beacons
- Towbars
- Underslung toolboxes
- Meshmaster cage kits



With physically demanding jobs comes the need for robust tools and equipment.

We have listened carefully to our clients, we have looked at issues facing them with payloads and towing laws (in the case of moving machinery around), looked at equipment storage needs, safe load retention and many other areas to ensure that these products are fit for purpose.

Arboriculture is a demanding job that requires robust equipment.

The Arbtruk that TGS has developed over a number of years has proven itself to be reliable, user friendly and a great tool for all involved in this challenging industry.

Constructed from alloy sections with robust tipping gear and equipment the Arbtruk will perform for many years and portray a professional image for all who use them.



Key features:

- Fully galvanised tipping frames
- Lightweight alloy sections
- 'Arbdek' flooring system
- Toolpod



Optional items:

- Warning beacons
- Towbars
- Chapter 8 high visibility markings
- Underslung toolboxes
- Tarpaulin/mesh net covers
- Ladder clamping



Refuse and cleansing are challenging operations for many Local Authorities and companies.

TGS have worked closely with many of these organisations to develop products that are safe, efficient, robust and keep whole life costs to a minimum.

Each organisation will have different ideas as to how their vehicles are operated and subsequently built. Here at TGS we will help to condense and streamline all these ideas and develop a cost effective product in accordance with the incoming Type Approval regulations and good practice.

We are confident that you will find a product within this section that will suit your particular needs.

with toolpod and sliding doors



This product is the result of close interaction with a Local Authority and has been in service for several years with an excellent track record.



The need to load refuse from each side and to have a secure storage pod has been taken into account along with choosing materials that will minimise corrosion without seriously impacting on payload.

Whole life costs have been considered by keeping all moving parts as simple as possible.

Key features:

- Sliding doors to each side
- Chassis mounted storage pod
- Galvanised tipping frames
- Rear barn doors
- Ventilation



Another innovative product that has served to increase the efficiency of Local Authorities and other operators.



This product has also been in service for several years with good results.

Again TGS listened to the professionals and developed a product that bears the TGS hallmark of quality whilst keeping cost in mind.



Key features:

- All steel sections are galvanised
- Galvanised tipping frames
- Side access
- Rear barn doors
- Alloy 'Tippadek' flooring



This great tool has been proved as a real benefit to Local Authorities and private enterprises for cleansing duties particularly void clearance operations.

The robust construction enables this product to withstand the usage that comes with these operations whilst taking into account the need for maximising the payload.

In service with the UK's leading organisations for many years, this is another TGS product that does 'what it says on the tin'.

Key features:

- Galvanised steelwork
- Alloy sections
- Alloy 'Tippadek' flooring
- High or low cages
- Tailifts fitted as options
- Tarpaulin or mesh covers



Those engaged in constructing and maintaining our highways and infrastructures demand and require tools and equipment that is robust, safe, functional and efficient.

Factors such as health and safety, duty of care, visibility and operator safety are the focus of discussion with engaging with clients.



TGS have a number of products that are used widely in the Highway and Civil Engineering sectors.



Many Local Authorities and Contractors have and are proving the benefit of these products.

Typical builds will include tipping bodies, small cranes, Chapter 8 hi-vis markings, hazard warning beacons, towing equipment and tool storage.

Key features:

- Galvanised steelwork
- Alloy sections
- Alloy flooring
- Chapter 8 high visibility markings
- ECE R65 compliant Beacons





**SPECIALIST
VEHICLE CONVERSIONS**

Animal welfare	73
Pest control	74
Traffic management	75
Emergency services	76-77
Utilities	78
Safety rails and access	79
Accessible	80
Seating	81-82
Welfare conversions	83
Healthcare/medical	84-85
Water systems	86



Alongside our standard range of products, TGS operate a highly successful Special Vehicle Conversions operation.

TGS SVC encompasses many areas from Animal Welfare through to Emergency Services.

This side of our operation has proved itself to be successful and has benefitted many organisations.

Our outstanding ability to work closely with organisations to understand their needs and to develop a vehicle or conversion that will maximise the potential of both vehicle and operator lies at the heart of this service.

Uncompromised attention to detail, materials and working practice are all core elements that clients will enjoy when taking advantage of TGS SVC.

The following pages will serve to inspire you and breed confidence that TGS can exceed your expectations.



TGS offer well proved and high quality conversions for those involved in animal welfare. These conversions are branded as Enviroplus-K9.

LA

Largely this involves Dog Warden operations along with Veterinary Practices and Animal Homes and Shelters.

Attention to detail is a hallmark of these conversions and each client can expect the full benefit of our personal interaction at every stage of the process from design to completion.

Optional items:

- Anti microbial coating
- Hazard warning systems
- Lockable doors
- Temperature monitoring systems

Key features:

- Durable, washable coatings
- Galvanised steel doors
- Polypropylene transport modules
- PPE storage solutions
- Powered and non-powered ventilation
- LED interior lighting
- Equipment storage
- Animal access solutions



The Enviroplus-Pest conversions have a well established track record within many Local Authorities and companies.

The same attention to detail is applied to these conversions to ensure that each conversion is fit for purpose and increases operator safety and efficiency.

These vehicles must be easily washable and transport chemicals and poisons in a safe manner.

Key features:

- Washable interiors
- Storage solutions
- LED lighting
- Ventilation
- PPE storage

Options:

- Anti microbial coatings
- Powered ventilation
- Physical security



Traffic Management is a high risk operation that demands proven, robust and reliable products as this relates directly to the safety and welfare of operatives.

TGS have numerous conversions in service with the UK's leading organisations that have proved their reliability and functionality.

Close client interaction from concept to production is always a key part of the process.

Key features:

- ECE R65 approved beacon and warning systems
- Chapter 8 compliant vinyl graphics
- Safety rails to body perimeter
- Reverse warning system



LA



LA

TGS have built up an enviable rapport with a number of the Emergency Services in the conversion of vehicles for a number of vital support roles.



These conversions result from very close interaction with each individual client and the vehicle users to ensure that important details are not missed along with all aspects of safety, functionality and operability being carefully considered.

TGS are not afraid to draw on the support of specialist contractors to assist with complex electrical, communications and power systems. By bringing all these skills together TGS can offer an all encompassing service to those engaged in our protection, safety and welfare to maximise the potential of their vehicles and operations.



Crash investigation unit



The Utility sector is one that we as consumers rely on very heavily and therefore it is essential that their vehicles are reliable, safe and efficient.



With the spotlight ever increasing on operator safety and duty of care, TGS offer a retro fit service in the supply and installation of safety rails and chains, barriers, steps and other items that minimise risk to vehicle operators.



TGS work with national organisations to ensure that the service we expect as consumers is supported by quality vehicles that are reliable, safe and efficient.



Conversions include:

- Incident investigation
- Highways incident support units
- Repair and maintenance vehicles
- 4 x 4 conversions



These items can be installed to our own products, to factory rated bodies or indeed bodies manufactured by our competitors.





To assist organisations that require the ability to transport disabled persons in their vehicles, TGS are able to offer a range of conversions that are based on safety, quality and functionality.



Conversions and equipment include:

- Wheelchair lifts
- Wheelchair/scooter ramp
- Restraint systems
- Removable seating
- Access steps



TGS offer a full range of seating for light commercial vehicles.

As always we recognise that safety is of paramount importance and we have identified and sourced products that meet not only recognised standards but will further enhance our enviable reputation.

From basic crew conversions to more complex conversions, TGS will provide a solution that meets your requirements.

Conversions and equipment include:

- MI tested floor systems
- MI tested seating
- Type approved bulkheads
- Bonded windows



Welfare conversions



For those organisations that have the need to carry 2/3 additional persons to their place of work, TGS offer a range of approved and tested seat/bulkhead combinations.

These conversions are safe, practical and look professional.

TGS can also convert the area behind the secondary bulkhead to carry parts, tools and other items as required.

Key features:

- OEM standard
- Moulded bulkhead
- Integral seating
- Tested and approved



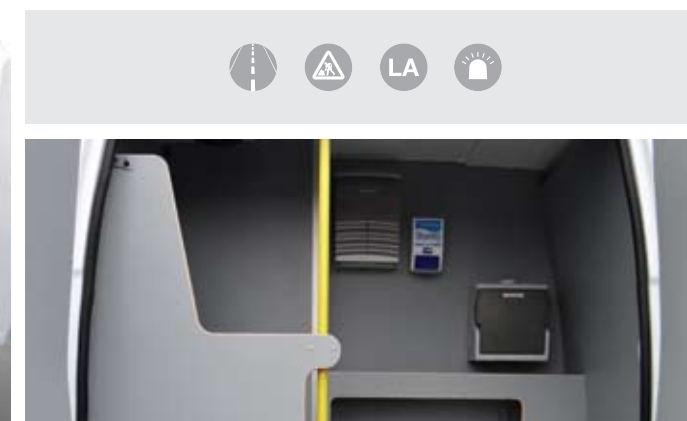
Many organisations have the need to care for their workforce whilst working on-site in providing toilet facilities, microwaves, hot water and handwashing equipment.



The TGS Crewmaster has been developed along with a leading Civil Engineering Company and has proved to be functional, reliable and above all can carry passengers in absolute safety.

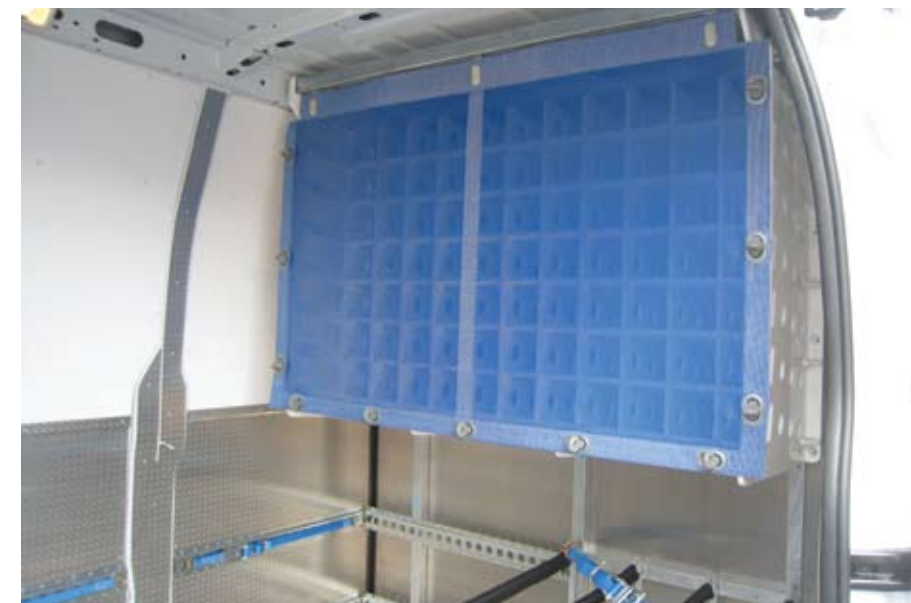
Key features:

- M1 seating and floor system
- Wipe clean panels
- Microwave
- Cassette toilet
- Handwash facilities
- LED lighting
- Ventilation





At the forefront of any organisation involved in medical equipment and laundry service is the minimising of cross contamination and infection control.

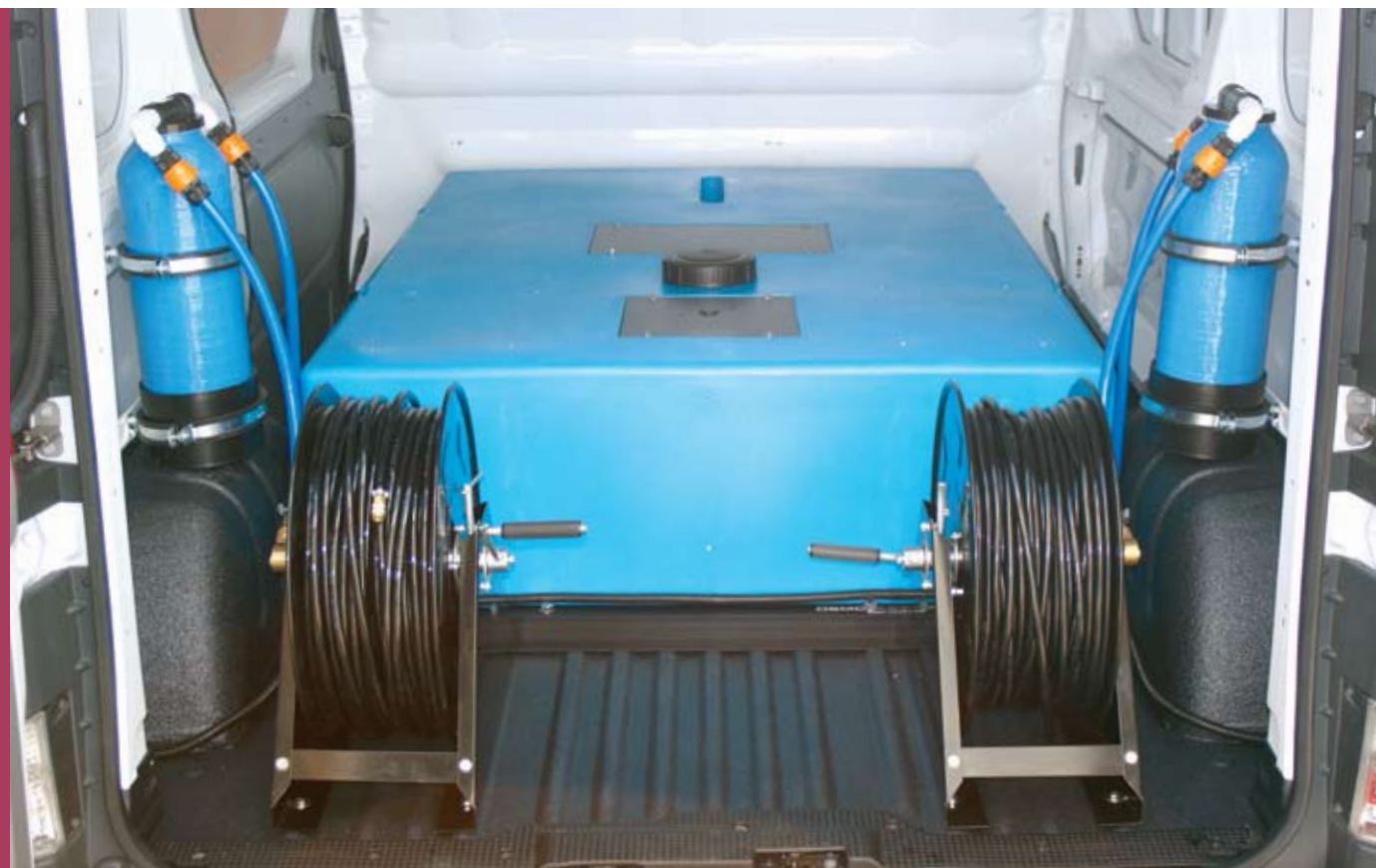


TGS have developed cutting edge conversions with some of the leading healthcare and medical companies to minimise these risks, increase operator safety and vehicle efficiency.

The Hygiene-Plus range of vehicle conversions have been tried, tested and proven for many years and TGS continue to work with industry professionals to develop products for this key industry.

Key features:

- Specialist anti-microbial coatings
- Loading systems
- Handwash systems
- Ventilation
- Winch systems
- Racking and restraint systems

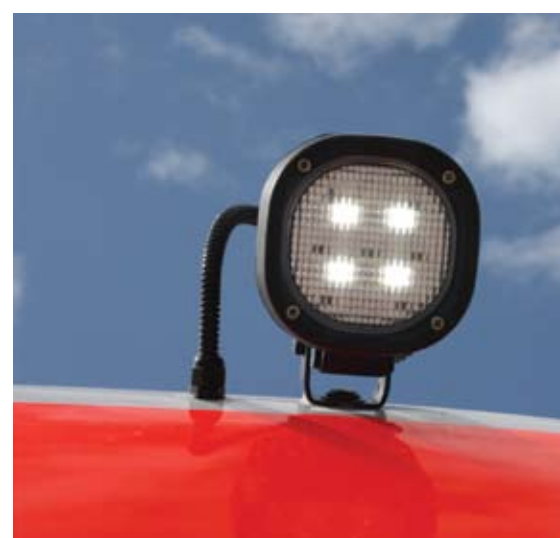
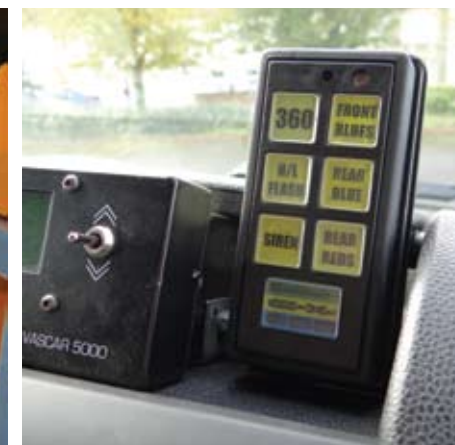


TGS offer a comprehensive range of tank and pumping systems for a broad spectrum of cleaning applications.



Working in partnership with one of the UK's leading cleaning equipment organisations, we can offer the following:

- Pumping systems
- Chemical dosing systems for heavy soiling
- Telescopic poles
- Lining systems for the base vehicle
- Demineralising filter systems
- Racking systems for the base vehicle
- Hot water systems



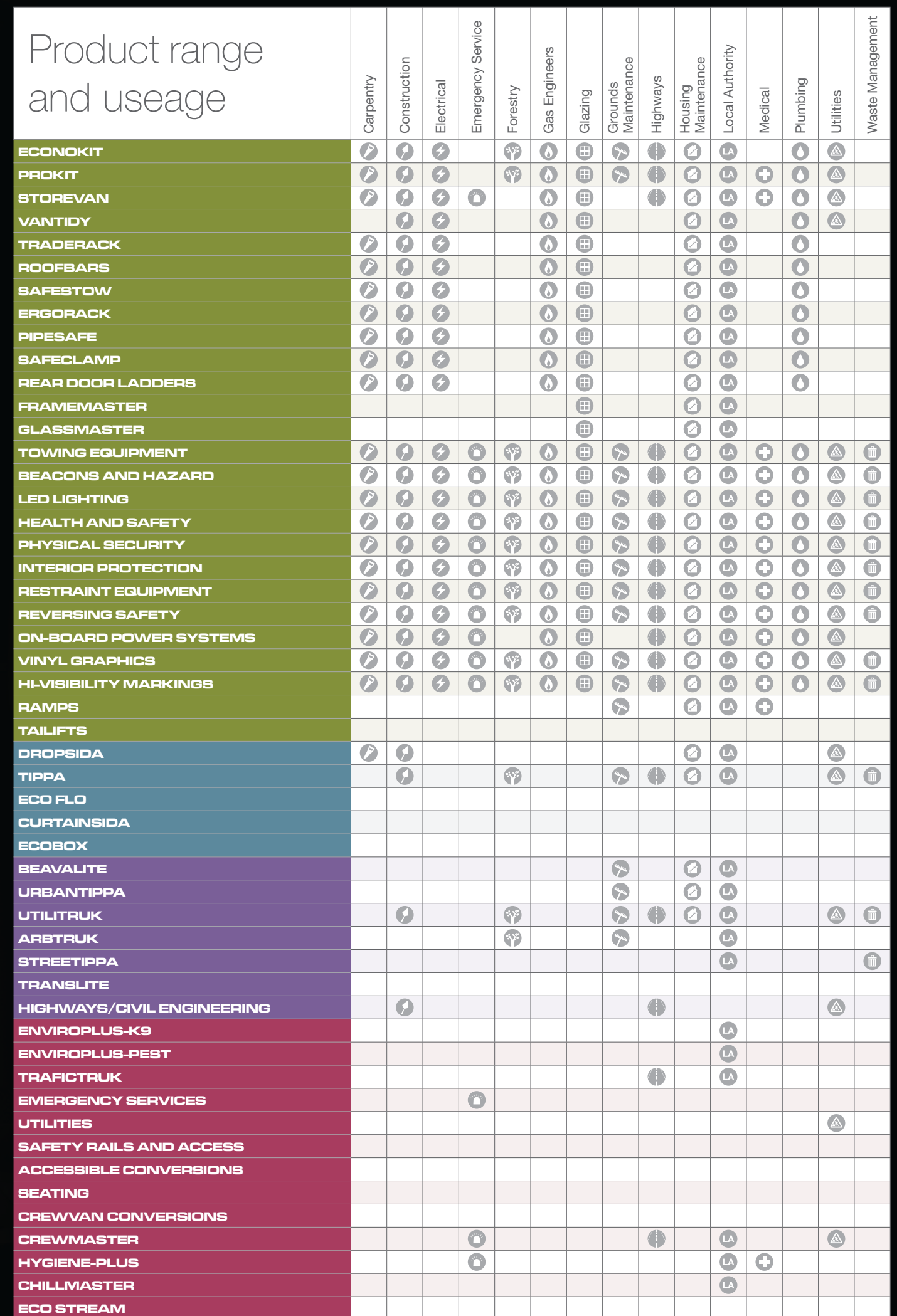
Terms & conditions

1.	INTERPRETATION
1.1	The definitions and rules of interpretation in this condition apply in these conditions; Customer: means the person, business or company who purchases the Work and/or Materials from the Supplier; Supplier: means TGS Coachworks of Woodpecker House, Balaclava Road, Fishponds, BS16 3LJ; Contract: means any contract between the Supplier and the Customer for the supply and purchase of the Work and/or Materials incorporating these conditions; Materials: means any parts and/or materials supplied by the Supplier in accordance with the Specification; Specification: means the detailed description of the Finished Product; Work: means the design and build work to be undertaken by the Supplier in accordance with the Contract; Vehicle: means the vehicle provided by the Customer on which the Work is to be performed; Finished Product: means the Vehicle incorporating the Work and the Materials;
1.2	A reference to a law is a reference to it as it is in force for the time being taking account of any amendment, extension, application or re-enactment and includes any subordinate legislation for the time being in force made under it.
1.3	Words in the singular include the plural and in the plural include the singular.
2.	APPLICATION OF TERMS
2.1	Subject to any variation under condition 2.3 the Contract shall be on these conditions to the exclusion of all other terms and conditions (including any terms or conditions which the Customer purports to apply under any purchase order, confirmation of order, specification or other document).
2.2	No terms or conditions endorsed on, delivered with or contained in the Customer's purchase order, confirmation of order, specification or other document shall form part of the Contract simply as a result of such document being referred to in the Contract.
2.3	These conditions apply to all the Supplier's Work and any variation to these conditions and any representations about the Work and/or Materials shall have no effect unless expressly agreed in writing and signed on behalf of the Supplier. The Customer acknowledges that it has not relied on any statement, promise or representation made or given by or on behalf of the Supplier which is not specified in the Contract. Nothing in this condition shall exclude or limit the Supplier's liability for fraudulent misrepresentation.
2.4	Each order or acceptance of a quotation for the Work and/or Materials by the Customer from the Supplier shall be deemed to be an offer by the Customer to purchase the Work and/or Materials subject to these conditions.
2.5	No order placed by the Customer shall be deemed to be accepted by the Supplier until a written acknowledgement of order is issued by the Supplier.
2.6	Any quotation is given on the basis that no Contract shall come into existence until the Supplier despatches an acknowledgement of order to the Customer. Any quotation is valid for a period of 30 days only from its date, provided that the Supplier has not previously withdrawn it.
2.7	Where the Customer is a consumer (as defined in the Unfair Contract Terms Act 1977 or the Unfair Terms in Consumer Contracts Regulations 1999), the consumer's statutory rights are not adversely affected by anything contained in these conditions.
3.	SPECIFICATION
3.1	It shall be the obligation of the Customer to supply the Specification and to ensure its completeness and accuracy.
3.2	Unless otherwise specified in the Contract or agreed between the parties in writing the Customer shall provide the Specification within 5 days of the date the acknowledgment was issued by the Supplier.
3.3	The Supplier shall be under no obligation to commence the Work until it has received and approved the Specification in writing, and such approval shall not be unreasonably withheld.
3.4	All samples, drawings, descriptive matter, specifications and advertising issued by the Supplier and any descriptions or illustrations contained in the Supplier's catalogues or brochures are issued or published for the sole purpose of giving an approximate idea of the Work and/or Materials and/or the Finished Product. They shall not form part of the Contract and this is not a sale by sample.
4.	SUPPLIER'S OBLIGATIONS
4.1	The Supplier shall perform the Work and deliver the Finished Product in accordance with, in all material respects, the Contract and the Specification.
4.2	The Supplier shall ensure that all of its personnel engaged in the provision of the Work have the necessary skills, expertise and diligence to undertake such Work and will conform to the professional standards generally observed in the industry.
4.3	The Supplier will use reasonable endeavours to meet any performance dates agreed between the parties, but any such dates shall be estimates only and time shall not be of the essence in performance of the Work or delivery of the Finished Product.
5.	CUSTOMERS OBLIGATIONS
5.1	The Customer acknowledges that the Supplier's ability to perform the Work depends upon the full and timely co-operation of the Customer (which the Customer agrees to provide), as well as the accuracy and completeness of any information the Customer provides to the Supplier. Accordingly the Customer shall:
5.1.1	provide the Supplier with access to, and use of, all information and documentation reasonably required by the Supplier for the performance by the Supplier of its obligations under the Contract;
5.1.2	co-operate with the Supplier in all matters relating to the Work; and
5.1.3	obtain and maintain all necessary licences and consents and comply with all relevant legislation in relation to the Finished Product, in all cases before the date on which the Work is to commence.
5.2	If the Supplier's performance of its obligations under the Contract is prevented or delayed by any act or omission of the Customer, its agents, subcontractors, consultants or employees, the Supplier shall not be liable for any costs, charges or losses sustained or incurred by the Customer arising directly or indirectly from such prevention or delay.
5.3	The Customer shall be liable to pay to the Supplier, on demand, all reasonable costs, charges or losses sustained or incurred by the Supplier (including, without limitation, any direct, indirect or consequential losses, loss of profit and loss of reputation, loss or damage to property and those arising from injury to or death of any person and loss of opportunity to deploy resources elsewhere) arising directly or indirectly from the Customer's fraud, negligence, failure to perform or delay in the performance of

	any of its obligations under the Contract, subject to the Supplier confirming such costs, charges and losses to the Customer in writing.
6.	DELIVERY
6.1	Unless otherwise specified in the Contract or agreed between the parties in writing, the Customer shall deliver the Vehicle to the Supplier's premises prior to commencement of the Work.
6.2	On completion of the Work, the Supplier shall notify the Customer that the Finished Product is available for collection (or delivery as the case may be).
6.3	The Customer shall collect the Finished Product within 5 days of the Supplier's notification (which may be oral or in writing) to the Customer that the Finished Product is available for collection.
6.4	Any obligation of the Supplier in respect of performance dates are intended as estimates only, and time shall not be made of the essence by notice.
6.5	The Customer shall provide at its expense adequate and appropriate equipment and manual labour for loading/unloading the Vehicle and/or the Finished Product.
6.6	Subject to the other provisions of these conditions the Supplier shall not be liable for any direct, indirect or consequential loss (all three of which terms include, without limitation, pure economic loss, loss of profits, loss of business, depletion of goodwill and similar loss), costs, damages, charges or expenses caused directly or indirectly by any delay in commencement of the Work or delivery of the Finished Product (even if caused by the Supplier's negligence), nor shall any delay entitle the Customer to terminate or rescind the Contract unless such delay exceeds 90 days.
7.	PRICE
7.1	Unless otherwise specified in the Contract or agreed between the parties in writing, the price for the Work and the Materials shall be set out in the Contract.
7.2	The price for the Work and the Materials shall be exclusive of any value added tax, and all costs or charges in relation to postage, packaging, loading, unloading, carriage, freight, bank charges, insurance, all of which amounts the Customer shall pay in addition when it is due to pay for the Work and the Materials.
7.3	Where the Supplier incurs extra cost owing to suspension or alteration of the time or location of delivery arising from the Customer's instructions or lack of instructions, or by reason of interruptions, delays, unusual hours, mistakes or work occasioned by the act or default of the Customer, such costs are payable in full by the Customer.
8.	PAYMENT
8.1	Subject to condition 8.5, and unless otherwise agreed by the Supplier in writing, the price for the Work and the Materials (together with all other sums payable by the Customer under the Contract) shall be payable by the Customer in full upon notification by the Supplier to the Customer that the Work is complete or upon notification by the Supplier to the Customer in accordance with condition 6.2, whichever is earlier.
8.2	Time for payment shall be of the essence.
8.3	All payments are due in pounds sterling and no payment shall be deemed to have been received until the Supplier has received cleared funds.
8.4	All payments payable to the Supplier under the Contract shall become due immediately on its termination despite any other provision.
8.5	The Customer shall make all payments due under the Contract in full without any deduction whether by way of set-off, counterclaim, discount, abatement or otherwise unless the Customer has a valid court order requiring an amount equal to such deduction to be paid by the Supplier to the Customer.
8.6	If the Customer fails to pay the Supplier any sum due pursuant to the Contract, the Customer shall be liable to pay interest to the Supplier on such sum from the due date for payment at the annual rate of 4% above the base lending rate from time to time of the Bank of England, accruing on a daily basis until payment is made, whether before or after any judgment. The Supplier reserves the right to claim interest under the Late Payment of Commercial Debts (Interest) Act 1998.
9.	TERMINATION
9.1	Without prejudice to any other rights or remedies which the parties may have, the Supplier may terminate the Contract without liability to the Customer immediately on giving written notice to the other if: (a) the Customer fails to pay any amount due under the Contract on the due date for payment and remains in default not less than seven days after being notified in writing to make such payment; or (b) the Customer commits a material breach of any of the terms of the Contract and (if such a breach is remediable) fails to remedy that breach within seven days of that party being notified in writing of the breach; or (c) circumstances exist or arise which, in the reasonable opinion of the Supplier, materially and adversely affect the performance of, or the ability to perform, the Customer's duties and obligations under the Contract; or (d) the Customer ceases or threatens to cease to carry out its business; or (e) the Customer becomes bankrupt or makes a composition or arrangement with his creditors or being a limited company has a Petition issued for the insolvency of that company or goes into liquidation or carries out its business under an Administrator, Receiver, Manager or Liquidator or enters into a scheme or arrangement for the benefit of its creditors or any of them.
9.2	On termination of the Contract by either party and for any reason:
9.2.1	All monies payable by the Customer under the Contract and not yet paid shall become payable immediately;
9.2.2	the accrued rights and liabilities of the parties as at termination and the continuation of any provision expressly stated to survive or implicitly surviving termination, shall not be affected.
9.2.3	the Supplier may at its option provide notice to the Customer (which may be oral or in writing) requiring the Customer to collect any item, including but not limited to any Vehicle, any Finished Product and/or any Materials from the Supplier's premises within 5 days of such notice.
10.	RISK/TITLE
10.1	The Materials and/or the Finished Product are at the risk of the Customer from the time of delivery.
10.2	Ownership of the Materials shall not pass to the Customer until the Supplier receives in full (in cash or cleared funds) all sums due to it in respect of:
(a)	the Work and the Materials; and
(b)	all other sums which are or which become due to the Supplier from the Customer on any account.
10.3	Until ownership of the Materials has passed to the Customer, the Customer shall: hold the Materials on a fiduciary basis as the Supplier's bailee; and
(a)	

(b)	maintain the Materials in satisfactory condition and keep them insured on the Supplier's behalf for their full price against all risks.
10.4	The Customer may resell the Materials before ownership has passed to it solely on the following conditions:
(a)	any sale shall be effected in the ordinary course of the Customer's business at full market value; and
(b)	and such sale shall be a sale of the Supplier's property on the Customer's own behalf and the Customer shall deal as principal when making such a sale.
10.5	The Customer's right to possession of the Materials shall terminate immediately if:
(a)	the Customer has a bankruptcy order made against him or makes an arrangement or composition with his creditors, or otherwise takes the benefit of any statutory provision for the time being in force for the relief of insolvent debtors, or (being a body corporate) convenes a meeting of creditors (whether formal or informal), or enters into liquidation (whether voluntary or compulsory) except a solvent voluntary liquidation for the purpose only of reconstruction or amalgamation, or has a receiver and/or manager, administrator or administrative receiver appointed of its undertaking or any part thereof, or documents are filed with the court for the appointment of an administrator of the Customer or notice of intention to appoint an administrator is given by the Customer or its directors or by a qualifying floating charge holder (as defined in paragraph 14 of Schedule B1 to the Insolvency Act 1986), or a resolution is passed or a petition presented to any court for the winding-up of the Customer or for the granting of an administration order in respect of the Customer, or any proceedings are commenced relating to the insolvency or possible insolvency of the Customer; or
(b)	the Customer suffers or allows any execution, whether legal or equitable, to be levied on his/its property or obtained against him/it, or fails to observe or perform any of his/its obligations under the Contract or any other contract between the Supplier and the Customer, or is unable to pay its debts within the meaning of section 123 of the Insolvency Act 1986 or the Customer ceases to trade; or
(c)	the Customer encumbers or in any way charges any of the Materials.
10.6	The Customer grants the Supplier, its agents and employees an irrevocable licence at any time to enter any premises where the Materials are or may be stored in order to inspect them, or, where the Customer's right to possession has terminated, to recover them.
10.7	The Supplier shall be entitled to recover payment for the Materials notwithstanding that ownership of any of the Materials has not passed from the Supplier.
10.8	On termination of the Contract, howsoever caused, the Supplier's (but not the Customer's) rights contained in this condition 10 shall remain in effect.
11.	WARRANTIES
11.1	Each of the parties warrants to the other that it has full power and authority to enter into and perform the Contract.
11.2	The Supplier warrants that:
11.2.1	it shall perform the Work with reasonable care and skill;
11.2.2	on delivery and for a period of one year following delivery the Materials will be of satisfactory quality; and
11.2.3	on delivery the Finished Product will accord substantially with the Specification.
11.3	The Contract sets out the full extent of the Supplier's obligations and liabilities in respect of the Work, the Materials and the Finished Product. All conditions, warranties or other terms concerning the Work, the Materials and/or the Finished Product which might otherwise be implied into the Contract or any collateral contract (whether by statute or otherwise) are hereby expressly excluded.
11.4	The Supplier shall not be liable for a breach of any of the warranties in condition 11.2.2 (and condition 11.2.1 but subject to condition 11.5) unless;
11.4.1	the Customer gives written notice of any defect to the Supplier (and to the carrier (if the defect is as a result of damage in transit) within 5 days of the time when the Customer discovers or ought to have discovered the defect; and
11.4.2	the Supplier is given a reasonable opportunity after receiving the notice of examining the Finished Product and the Customer (if asked to do so by the Supplier) returns the Finished Product to the Supplier's place of business for the examination to take place there.
11.5	The Supplier shall not be liable for a breach of the warranty in condition 11.2.3 (and/or condition 11.2.1 to the extent that any failure to perform the Work with reasonable care and skill has resulted in a breach of the warranty in condition 11.2.3) unless;
11.5.1	the Customer gives written notice of any defect to the Supplier (and to the carrier if the defect is as a result of damage in transit) within 5 days of delivery; and
11.5.2	the Supplier is given a reasonable opportunity after receiving the notice of examining the Finished Product and the Customer (if asked to do so by the Supplier) returns the Finished Product to the Supplier's place of business for the examination to take place there.
11.6	The Supplier shall not be liable for a breach of any of the warranties in condition 11.2 if;
11.6.1	the Customer makes any further use of the Finished Product after giving notice under condition 11.4.1 or condition 11.5.1; or
11.6.2	the defect arises because the Customer failed to follow the Supplier's oral or written instructions as to the storage, installation, commissioning, use or maintenance of the Finished Product or (if none exist) good trade practice; or
11.6.3	the Customer alters or repairs the Finished Product without the written consent of the Supplier and such alteration is deemed by the Supplier to be a cause of any breach of any of the warranties in condition 11.2.
11.7	Subject to the other provisions contained in these conditions, if the Work, the Finished Product or any of the Materials do not conform with any of the warranties in condition 11.2 the Supplier shall at its option correct the defect and/or non conformance with the Specification provided that, if the Supplier so requests, the Customer shall return the Finished Product to the Supplier.
11.8	If the Supplier complies with condition 11.7 it shall have no further liability for a breach or any of the warranties in condition 11.2.
11.9	Any obligation of the Customer to return the Finished Product under condition 11.7, condition 11.4.2 or condition 11.5.2 shall be an obligation undertaken at the Customer's expense.
12.	LIMITATION OF LIABILITY (THE CUSTOMERS ATTENTION IS DRAWN TO THIS PROVISION IN PARTICULAR)
12.1	Subject to condition 11, the following provisions set out the entire financial liability of the Supplier (including any liability for the acts or omissions of its employees, agents and sub-contractors) to the Customer in respect of:
12.1.1	any breach of the Contract;
12.1.2	any use made by the Customer of the Work, any of the Materials or the Finished Product; and
12.1.3	any representation, statement or tortious act or omission including negligence arising under or in connection with the Contract.

12.2	All warranties, conditions and other terms implied by statute or common law (save for the conditions implied by section 12 of the Sale of Goods Act 1979) are, to the fullest extent permitted by law, excluded from the Contract.
12.3	Nothing in these conditions excludes or limits the liability of the Supplier:
12.3.1	for death or personal injury caused by the Supplier's negligence; or
12.3.2	under section 2(3), Consumer Protection Act 1987; or
12.3.3	for any matter which it would be illegal for the Supplier to exclude or attempt to exclude its liability;
12.3.4	for fraud or fraudulent misrepresentation.
12.4	Subject to condition 12.2 and condition 12.3:
12.4.1	the Supplier's total liability in contract, tort (including negligence or breach of statutory duty), misrepresentation, restitution or otherwise, arising in connection with the performance or contemplated performance of the Contract shall be limited to the total price paid and/or payable by the Customer for the Work and the Materials under the Contract; and
12.4.2	the Supplier shall not be liable to the Customer for loss of profit, loss of business, loss of use, or depletion of goodwill in each case whether direct, indirect or consequential, or any claims for consequential compensation whatsoever (howsoever caused) which arise out of or in connection with the Contract.
13	STORAGE CHARGES
13.1	Where the Customer fails to comply with any of its obligations in condition 6.2 or condition 9.2.3, storage charges at the Supplier's standard rate shall accrue daily and shall be immediately payable by the Customer to the Supplier on demand.
13.2	Where the Supplier exercises any right under condition 14.1.1 storage charges at the Supplier's standard rate shall accrue daily and shall be immediately payable by the Customer to the Supplier on demand.
13.3	The provisions contained in this condition 13 together with any provision referred to in this condition 13 shall survive termination of the Contract for any reason.
14	LIEN
14.1	The Supplier shall have a right of lien over the Vehicle (and/or the Finished Product as the case may be) and such right shall include:
14.1.1	a right to retain the Vehicle (and/or the Finished Product as the case may be) at all times during which any monies due to the Supplier by the Customer remain unpaid;
14.1.2	a right to take any such steps as are necessary to put the Vehicle (and/or the Finished Product as the case may be) into a saleable condition;
14.1.2	a right to sell the Vehicle (and/or the Finished Product as the case may be); and
14.1.2	a right to retain form the proceeds of sale all monies due to the Supplier by the Customer (including any costs incurred in putting the Vehicle (and/or the Finished Product as the case may be) into a saleable condition and the expenses of such sale.
15	ASSIGNMENT
15.1	The Supplier may assign the Contract or any part of it to any person, firm or company.
15.2	The Customer shall not be entitled to assign the Contract or any part of it without the prior written consent of the Supplier.
16	FORCE MAJEURE
16.1	The Supplier reserves the right to defer the date of delivery or to cancel the Contract (without liability to the Customer) if it is prevented from or delayed in the carrying on of its business due to circumstances beyond the reasonable control of the Supplier (including, without limitation, acts of God, governmental actions, war or national emergency, acts of terrorism, protests, riot, civil commotion, fire, explosion, flood, epidemic, lock-outs, strikes or other labour disputes (whether or not relating to either party's workforce), or restraints or delays affecting carriers or inability or delay in obtaining supplies of adequate or suitable materials, provided that, if the event in question continues for a continuous period in excess of 90 days, the Customer shall be entitled to give notice in writing to the Supplier to terminate the Contract.
17	GENERAL
17.1	Each right or remedy of the Supplier under the Contract is without prejudice to any other right or remedy of the Supplier whether under the Contract or not.
17.2	If any provision of the Contract is found by any court, tribunal or administrative body of competent jurisdiction to be wholly or partly illegal, invalid, void, voidable, unenforceable or unreasonable it shall to the extent of such illegality, invalidity, voidness, voidability, unenforceability or unreasonableness be deemed severable and the remaining provisions of the Contract and the remainder of such provision shall continue in full force and effect.
17.3	Failure or delay by the Supplier in enforcing or partially enforcing any provision of the Contract shall not be construed as a waiver of any of its rights under the Contract.
17.4	Any waiver by the Supplier of any breach of, or any default under, any provision of the Contract by the Customer shall not be deemed a waiver of any subsequent breach or default and shall in no way affect the other terms of the Contract.
17.5	The parties to the Contract do not intend that any term of the Contract shall be enforceable by virtue of the Contracts (Rights of Third Parties) Act 1999 by any person that is not a party to it.
17.6	The formation, existence, construction, performance, validity and all aspects of the Contract shall be governed by English law and the parties submit to the exclusive jurisdiction of the English courts.
18	NOTICES
18.1	All notices between the parties about the Contract shall be in writing and delivered by hand or sent by first class post or sent by fax or email:
18.1.2	in case of notices to the Supplier to its place of business or such changed address as shall be notified to the Customer by the Supplier; or
18.1.3	(in the case of notices to the Customer) to any address of the Customer set out in any document which forms part of the Contract or such other address as shall be notified to the Supplier by the Customer.
18.2	Notices shall be deemed to have been received:
18.2.2	if sent by pre-paid first class post, two days (excluding Saturdays, Sundays and bank and public holidays) after posting (exclusive of the day of posting); or
18.2.3	if delivered by hand, on the day of delivery; or
18.2.4	if sent by fax or email on a working day prior to 4.00 pm, at the time of transmission and otherwise on the next working day.





SPECIALIST VEHICLE CONVERSIONS

INDUSTRY SPECIFIC BODIES

STANDARD VEHICLE BODIES

VEHICLE EQUIPMENT



TGS Group
Woodpecker House
Balaclava Road, Fishponds
Bristol BS16 3LJ

phone: 0117 965 9965
email: sales@tgs-group.com
website: www.tgs-group.com

MAXIMISING VEHICLE POTENTIAL